

FOR LEASE

5,249 Total SF
\$0.41/SF NNN

**Brummett
& COMPANY**
14950 Heathrow Forest Parkway, Suite 100
Houston, Texas 77032 Tel. 281-442-5404
LEASING@BRUMMETTANDCOMPANY.COM



CENTURY CENTER BUSINESS PARK

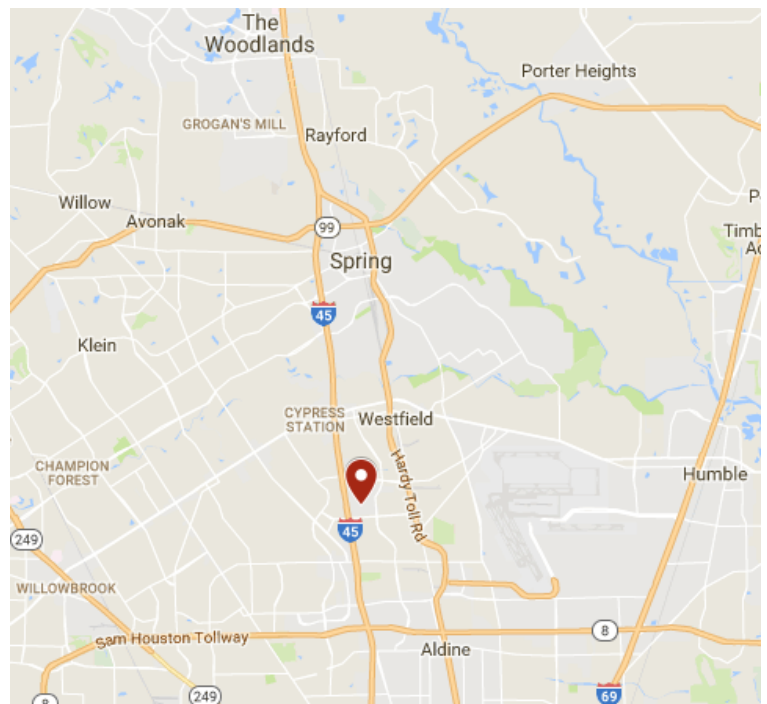
14850 Woodham Drive, Suite B-130. Houston, Texas 77073

DETAILS

- Attractive and secure flex office/warehouse business park in North Houston submarket.
- **No flooding during Hurricane Harvey**
- Easy access to I-45, Beltway 8, & Hardy Toll Rd.
- Electric-gated truck court with key-code access.
- Windowed offices & well-maintained landscaping.
- Privately Patrolled.

14850 Woodham Drive, Suite B-130 Features:

- Total SF: 5,249 (\pm 3,000 SF of which is office)
- Clear height: 18.5'
- Truck doors: 2 semi dock
- Rate: \$0.41/SF NNN (+ OpEx = \$0.59/SF Gross)
- Available August 2018



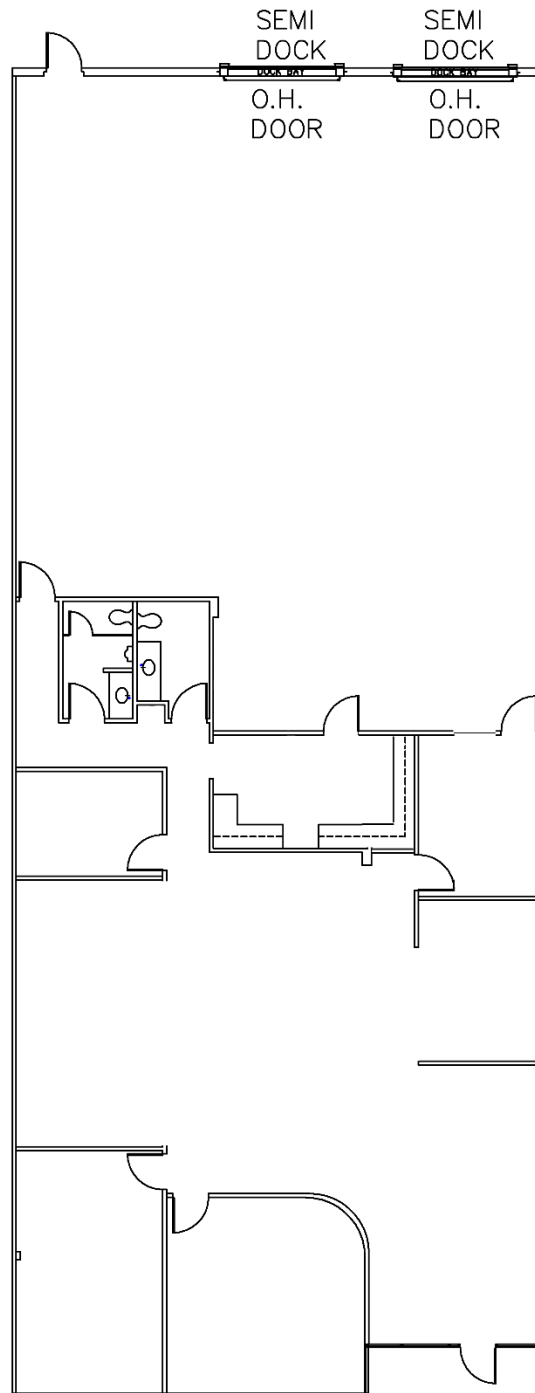
[Link: Google Maps](#)

© 2018 Brummett and Company. The information above is believed reliable. While its accuracy is not doubted, no guarantee, warranty or representation about it is hereby stated or implied. It is the responsibility of any interested party to independently confirm its accuracy and completeness. Rates quoted are "as-is" initial base rents only. Interested parties should conduct a careful, independent investigation of the properties to determine suitability.

FOR LEASE

5,249 Total SF
\$0.41/SF NNN

**Brummett
& COMPANY**
14950 Heathrow Forest Parkway, Suite 100
Houston, Texas 77032 Tel. 281-442-5404
LEASING@BRUMMETTANDCOMPANY.COM



CENTURY CENTER BUSINESS PARK

14850 Woodham Drive, Suite B-130. Houston, Texas 77073

© 2018 Brummett and Company. The information above is believed reliable. While its accuracy is not doubted, no guarantee, warranty or representation about it is hereby stated or implied. It is the responsibility of any interested party to independently confirm its accuracy and completeness. Rates quoted are "as-is" initial base rents only. Interested parties should conduct a careful, independent investigation of the properties to determine suitability.