

FOR LEASE

3,815 Total SF
\$0.39/SF NNN

 **Brummett
& COMPANY**
14950 Heathrow Forest Parkway, Suite 100
Houston, Texas 77032 Tel. 281-442-5404
LEASING@BRUMMETTANDCOMPANY.COM



COMMERCE PARK NORTH BUSINESS CENTER

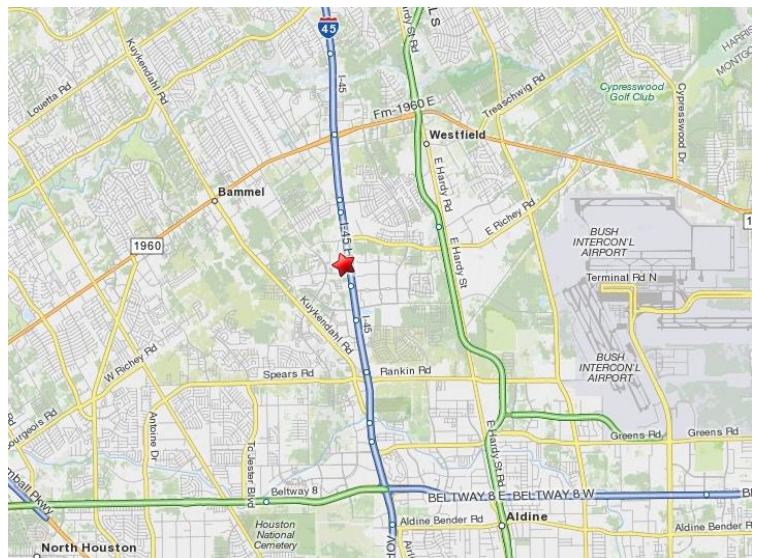
335 Pennbright Drive, Suite 140. Houston, Texas 77090

DETAILS

- Attractive and secure flex office/warehouse business park in North Houston submarket.
- Easy access to I-45, Beltway 8, & Hardy Toll Rd.
- Electric-gated truck court with key-code access.
- Windowed offices & well-maintained landscaping.
- Privately Patrolled.
- **No flooding during Hurricane Harvey**

335 Pennbright Drive, Suite 140 Features:

- Total SF: 3,815 (± 1,795 SF of which is office)
- Clear height: 14.5'
- Truck doors: 1 semi dock, 1 drive-in ramp
- Rate: \$0.39/SF NNN (+ OpEx = \$0.59/SF Gross)
- Available October 2018



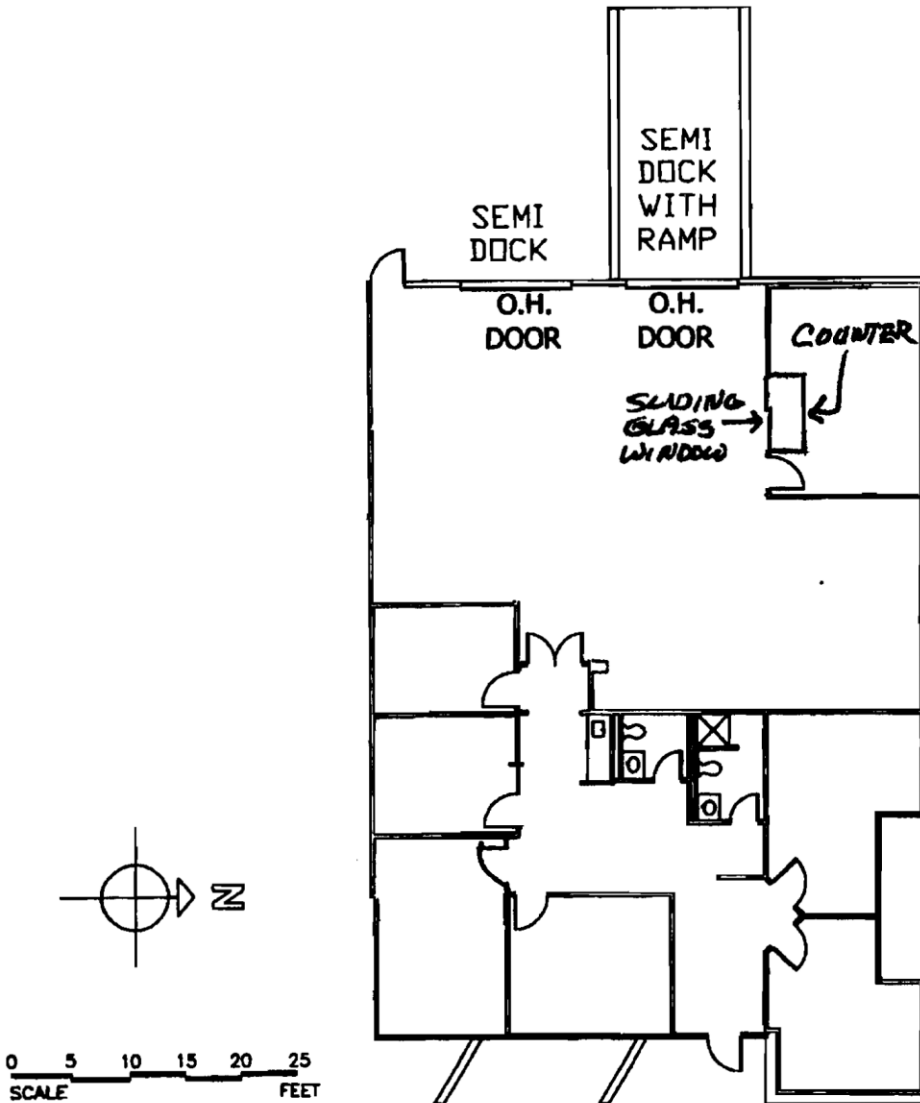
[Link: Google Maps](#)

© 2018 Brummett and Company. The information above is believed reliable. While its accuracy is not doubted, no guarantee, warranty or representation about it is hereby stated or implied. It is the responsibility of any interested party to independently confirm its accuracy and completeness. Rates quoted are "as-is" initial base rents only. Interested parties should conduct a careful, independent investigation of the properties to determine suitability.

FOR LEASE

3,815 Total SF
\$0.39/SF NNN

**Brummett
& COMPANY**
14950 Heathrow Forest Parkway, Suite 100
Houston, Texas 77032 Tel. 281-442-5404
LEASING@BRUMMETTANDCOMPANY.COM



COMMERCE PARK NORTH BUSINESS CENTER

335 Pennbright Drive, Suite 140. Houston, Texas 77090

© 2018 Brummett and Company. The information above is believed reliable. While its accuracy is not doubted, no guarantee, warranty or representation about it is hereby stated or implied. It is the responsibility of any interested party to independently confirm its accuracy and completeness. Rates quoted are "as-is" initial base rents only. Interested parties should conduct a careful, independent investigation of the properties to determine suitability.