

# FOR LEASE

11,234 Total SF  
\$0.41/SF NNN

**Brummett  
& COMPANY**  
14950 Heathrow Forest Parkway, Suite 100  
Houston, Texas 77032 Tel. 281-442-5404  
[LEASING@BRUMMETTANDCOMPANY.COM](mailto:LEASING@BRUMMETTANDCOMPANY.COM)



## CENTURY CENTER BUSINESS PARK

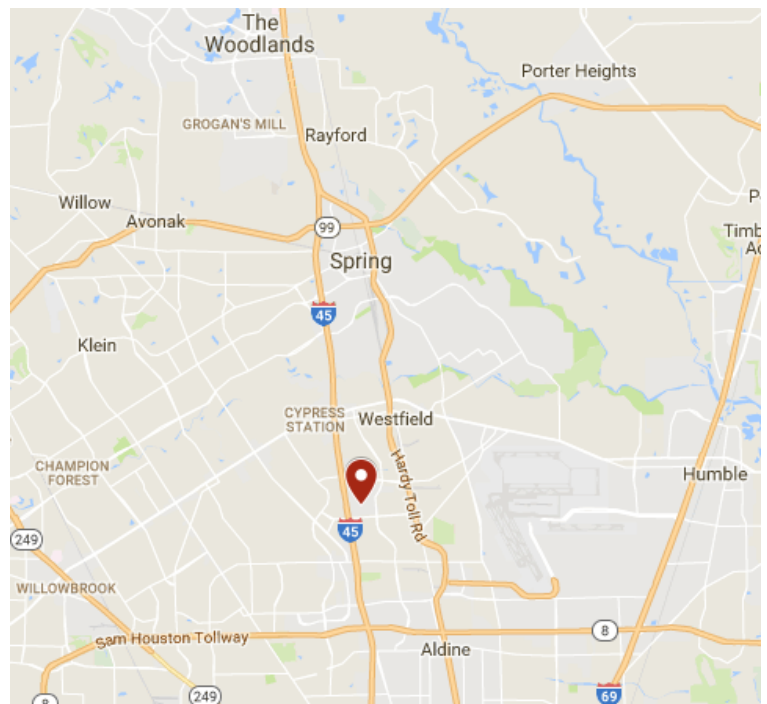
14850 Woodham Drive, Suite B-132. Houston, Texas 77073

### DETAILS

- Attractive and secure flex office/warehouse business park in North Houston submarket.
- **No flooding during Hurricane Harvey**
- Easy access to I-45, Beltway 8, & Hardy Toll Rd.
- Electric-gated truck court with key-code access.
- Windowed offices & well-maintained landscaping.
- Privately Patrolled.

#### **14850 Woodham Drive, Suite B-132 Features:**

- Total SF: 11,234
- Will consider further demo of office area to  $\pm$  35%
- Clear height: 18.5'
- Truck doors: 3 semi dock, 1 ramp to grade
- Rate: \$0.41/SF NNN (+ OpEx = \$0.59/SF Gross)
- Available August 2018



[Link: Google Maps](#)

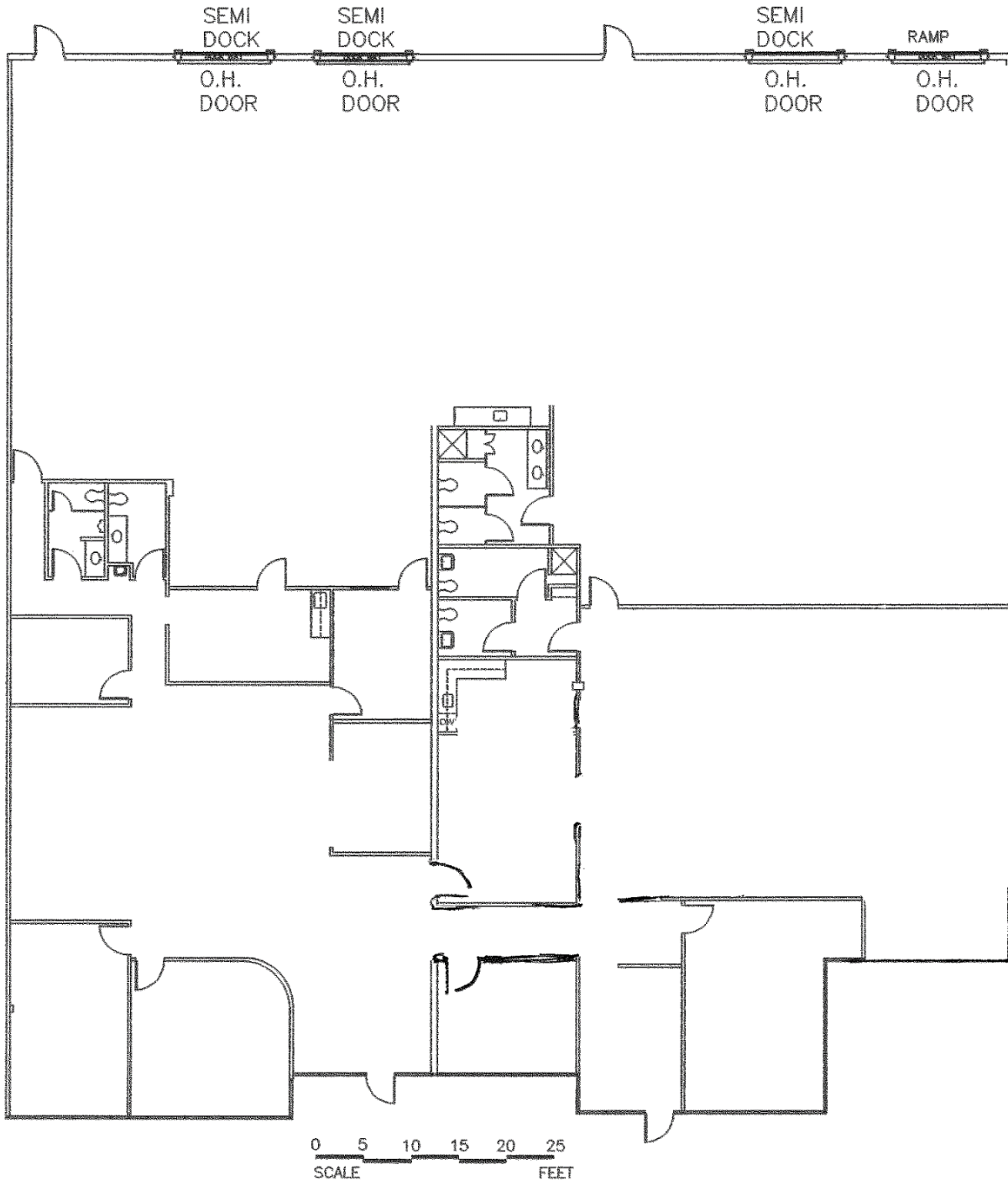
© 2018 Brummett and Company. The information above is believed reliable. While its accuracy is not doubted, no guarantee, warranty or representation about it is hereby stated or implied. It is the responsibility of any interested party to independently confirm its accuracy and completeness. Rates quoted are "as-is" initial base rents only. Interested parties should conduct a careful, independent investigation of the properties to determine suitability.

# FOR LEASE

11,234 Total SF

\$0.41/SF NNN

**Brummett  
& COMPANY**  
14950 Heathrow Forest Parkway, Suite 100  
Houston, Texas 77032 Tel. 281-442-5404  
[LEASING@BRUMMETTANDCOMPANY.COM](mailto:LEASING@BRUMMETTANDCOMPANY.COM)



## CENTURY CENTER BUSINESS PARK

14850 Woodham Drive, Suite B-132. Houston, Texas 77073

© 2018 Brummett and Company. The information above is believed reliable. While its accuracy is not doubted, no guarantee, warranty or representation about it is hereby stated or implied. It is the responsibility of any interested party to independently confirm its accuracy and completeness. Rates quoted are "as-is" initial base rents only. Interested parties should conduct a careful, independent investigation of the properties to determine suitability.