

# FOR LEASE

9,079 Total SF  
\$0.41/SF NNN

**Brummett  
& COMPANY**  
14950 Heathrow Forest Parkway, Suite 100  
Houston, Texas 77032 Tel. 281-442-5404  
[LEASING@BRUMMETTANDCOMPANY.COM](mailto:LEASING@BRUMMETTANDCOMPANY.COM)

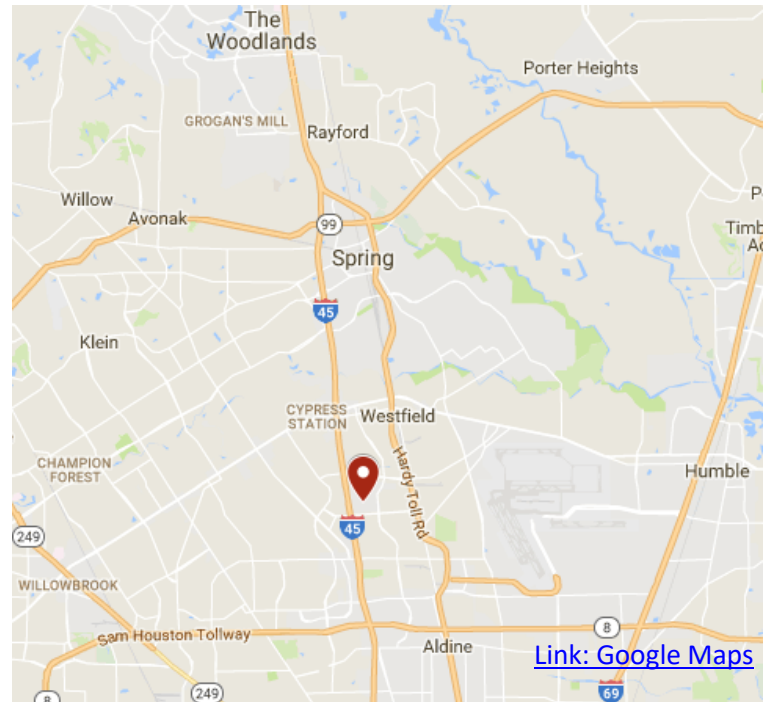


## CENTURY PLAZA BUSINESS PARK

321 Century Plaza Dr., Suite 130, Houston, TX 77032

### DETAILS

- Attractive and secure business park in North Houston submarket, just minutes south of the ExxonMobil campus.
- Easy access to I-45, Beltway 8 & Hardy Toll Rd.
- Electric-gated truck court with key-code access, and privately patrolled.
- 321 Century Plaza Dr., Suite 130 Features:
  - Total SF: 9,079 ( $\pm$  60% of which is office)
  - Clear height: 14.5'
  - Truck doors: 3 grade level
  - Rate: \$0.41/SF NNN (+ OpEx = \$0.59/SF Gross)
  - Available: May 2018



[Link: Google Maps](#)

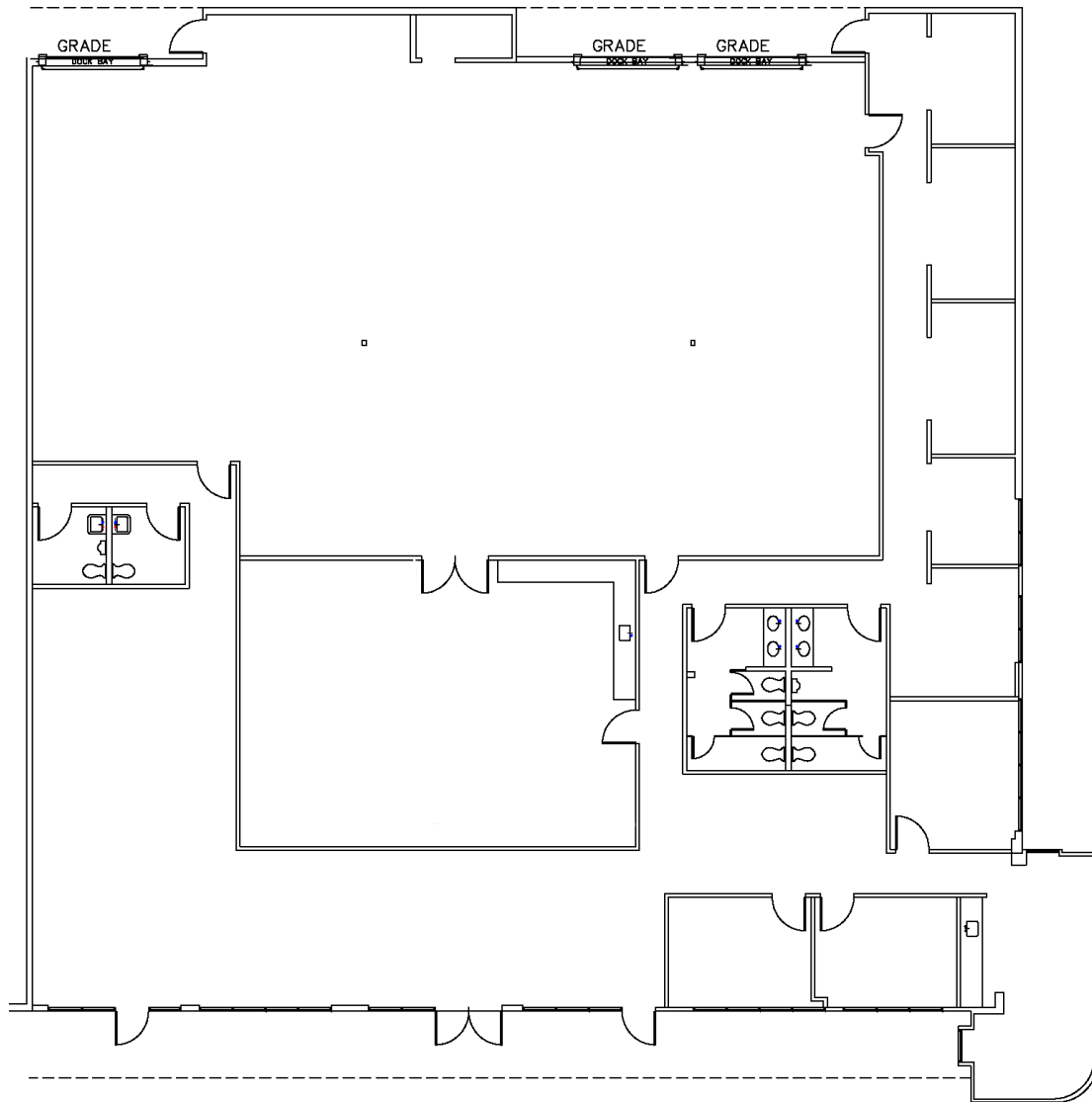
© 2018 Brummett and Company. The information above is believed reliable. While its accuracy is not doubted, no guarantee, warranty or representation about it is hereby stated or implied. It is the responsibility of any interested party to independently confirm its accuracy and completeness. Rates quoted are "as-is" initial base rents only. Interested parties should conduct a careful, independent investigation of the properties to determine suitability.

# FOR LEASE

9,079 Total SF

\$0.41/SF NNN

**Brummett  
& COMPANY**  
14950 Heathrow Forest Parkway, Suite 100  
Houston, Texas 77032 Tel. 281-442-5404  
LEASING@BRUMMETTANDCOMPANY.COM



## CENTURY PLAZA BUSINESS PARK

321 Century Plaza Dr., Suite 130, Houston, TX 77032

© 2018 Brummett and Company. The information above is believed reliable. While its accuracy is not doubted, no guarantee, warranty or representation about it is hereby stated or implied. It is the responsibility of any interested party to independently confirm its accuracy and completeness. Rates quoted are "as-is" initial base rents only. Interested parties should conduct a careful, independent investigation of the properties to determine suitability.